



RESIDENCE

17 Kiln Drive, Stewarton, KA3 5BH

www.residencestateagents.co.uk



RESIDENCE



4 Bedrooms | 2 Public Rooms | 3 Bathrooms



This fantastic and truly stunning detached villa is set within a highly sought-after area of Stewarton and offers beautifully upgraded accommodation, perfectly suited to modern family living.

Having been thoughtfully modified by the current owners, the property immediately impresses on arrival with a spacious monoblock driveway and a substantial garage, setting the tone for what lies within.

Internally, the home is arranged over two well-designed levels. A welcoming reception hallway provides access to all principal apartments, including a versatile front-facing dining room which can easily adapt to suit a variety of family needs. The true heart of the home is the exceptional open-plan kitchen and family/TV area, designed with both style and functionality in mind. The stunning kitchen features a range of fitted units, integrated Smeg appliances, and a generous central island. French doors from the kitchen lead to a private, sectioned garden area with its own patio, while the family/TV space is enhanced by large bi-fold doors opening onto the rear garden, seamlessly blending indoor and outdoor living. The ground floor is further complemented by a stylish and modern WC.

On the upper level, the property continues to impress with a contemporary family bathroom and four generously proportioned bedrooms. The master suite benefits from an upgraded en-suite shower room.

Externally, the rear garden is fully enclosed by timber fencing and thoughtfully divided into two sections by a wooden partition, making it ideal for families with children or pets. The garden enjoys excellent natural sunlight throughout the day and features a spacious raised composite deck, perfect for relaxing or entertaining.

Stewarton combines countryside charm with excellent connectivity, offering quick rail links to Glasgow and easy access via the A77 and M77. Local amenities are close by, and the property sits within the peaceful and popular Draffen Park.



1786.81 sq ft | EER = B



RESIDENCE



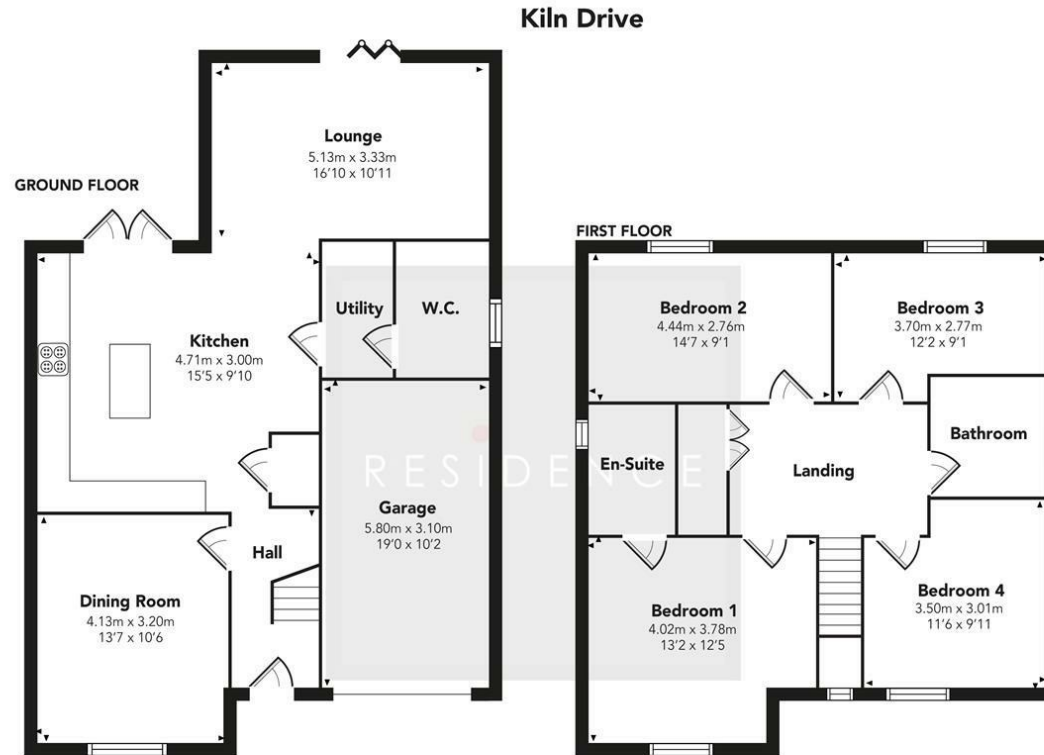


RESIDENCE



Viewing by appointment with Residence Strathaven

T: 01357 572222 | E: strathaven@residenceestateagents.co.uk | A: 3 Bridge Street, Strathaven, ML10 6AN



Floor Plan measurements are approximate and are for illustrative purposes only. While we do not doubt the floor plans accuracy, we make no guarantee, warranty or representation as to the accuracy and completeness of the floor plan. You or your advisors should conduct a careful, independent investigation of the property to determine to your satisfaction as to the suitability of the property for your space requirements.

Produced by Plush Plans Ltd

We believe these details to be accurate; however, they do not form any part of a contract. Fixtures and fittings are not included unless specified in the enclosed. Photographs are for general information and it must not be inferred that any item is included for sale with the property. All distances and measurements are approximate. Floorplans may not be to scale and are for illustration purposes only.